

Fair Isle Chicks Egg Cosy

Designed by Sylvia Leake

These cute Fair Isle Chicks look gorgeous decorating an egg cosy for your Easter breakfast table. You could also use the cosy to cover chocolate eggs for the children as an Easter surprise!

This cosy is an easy and quick knit, an ideal first Fair Isle project, why not make more than one using different colour combinations.



PATTERN INFORMATION

Size

9.5cm/3¾in high, 15.5cm/6in circumference

Materials

Yarn: 100% wool or a wool/acrylic mix is ideal in DK/8ply/light worsted weight.

Suggested shades:

Navy (MC) and Orange and Yellow (CCs)

Yarn amounts: No more than 15g in MC and 5g in CCs.

Note: Yarn amounts given are based on average requirements and are approximate.

Notions:

1 pair 4mm (No 8/US 6) needles

Tapestry Needle

Tension/Gauge

22 sts and 28 rows to 10cm/4in using 4mm needles over st st after light steaming.

Use larger or smaller needles if necessary to obtain correct tension.

Pattern Notes

Knit side is used as right side.

Abbreviations

beg – begin(s), beginning

CC – contrast colour

cm – centimetre(s)

cont – continue(s), continuing

DK – double knitting (light worsted)

g st – garter stitch (knit every row)

in – inch(es)

k – knit

k2tog – knit 2 stitches together (knit the next 2 stitches together as one - to decrease)

L - left

MC – main colour

mm – millimetres

p – purl

R - right

RS – right side

rem – remain(s), remaining

rep - repeat

st – stitch, **sts** – stitches

st st – stocking stitch (knit 1 row, purl 1 row, rep these 2 rows throughout)

tog – together

WS – wrong side

Fair Isle Egg Cosy

Using 4mm/US 6 needles and MC, cast on 37 sts.

Tip: When casting on leave a long tail to use when sewing up back seam.

Bottom Edging

Work 4 rows in g st.

Body

RS facing.

Using MC and CC in Orange and starting with a k row, work 3 rows in st st following the Chicks Fair Isle chart below.

Using MC and CC in Yellow cont in st st and work the next 10 rows from chart.

13 rows worked.



Pattern Note

When working from chart, read odd rows (k) from R to L and even rows (p) from L to R. Begin reading from bottom R of chart.

Chicks Fair Isle Chart

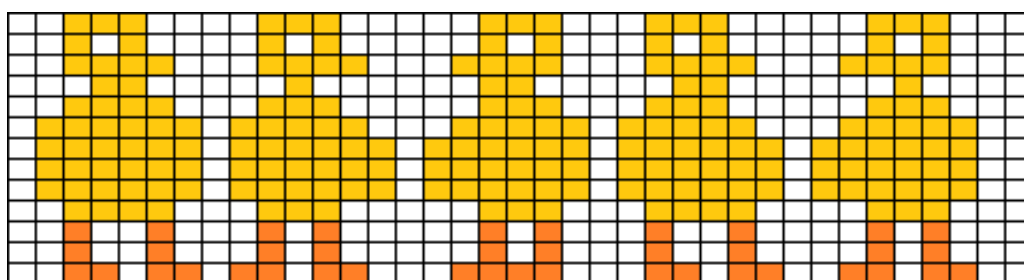


Chart:
13 rows x 37 sts

← *Begin here*

Row 14: p.

Row 15-16: work 2 more rows in st st.

Shape top

Row 1: k2, k2tog, *k3, k2tog, rep from * to last 3 sts, k3. (30 sts)

Row 2: p.

Row 3: *k2, k2tog, rep from * to last 2 sts, k2. (23 sts)

Row 4: p.

Row 5: k2, k2 tog, *k1, k2tog, rep from * to last 2 sts, k2. (16 sts)

Row 6: p.

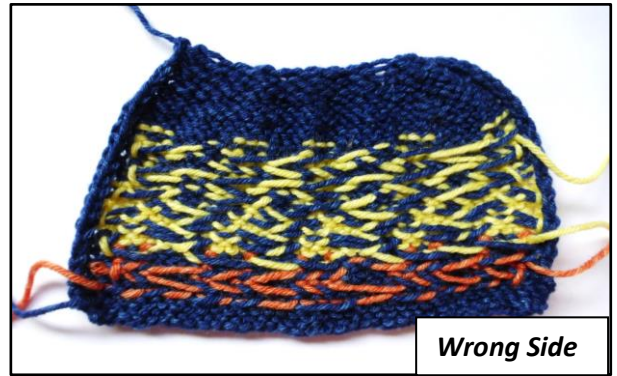
Row 7: *k1, k2tog, rep from * to last st, k1. (11 sts)

Cut yarn, leaving a long tail. Using a darning needle, thread yarn through the rem 11 sts ready to pull up.



To make up

With WS uppermost, lightly steam press.
Using cast on tail end and mattress stitch, join centre back seam.
Pull up stitches at top and secure.
Weave in all rem yarn ends on inside.



Pattern Variations



You could use black beads for the eyes, add as you knit using a small crochet hook. The beads will need to have a hole large enough for 2 strands of the yarn to pass through.

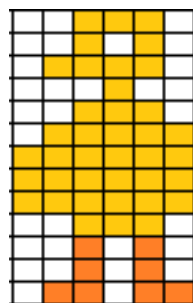
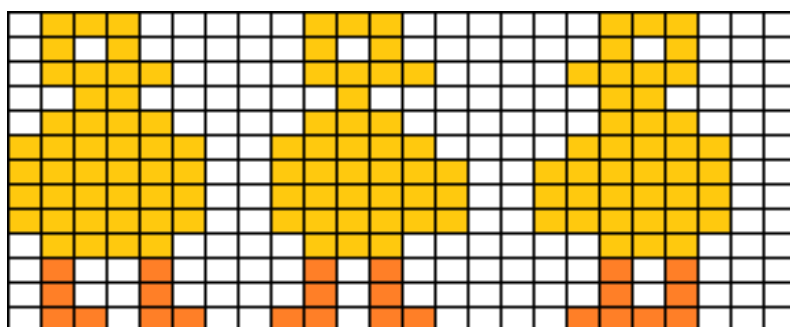


Chart: 13 rows x 6 sts

Use the chicks as individual motifs on mittens or pockets.

Chart: 13 rows x 24 sts

Use the chicks as a repeat pattern on hats, scarves or garment borders.



I have reworked the chart here with 2 sts between each chick to make a 24 st pattern repeat. (The 24 st pattern repeat would suit machine knitters – punch card or electronic.)

Enjoy these motifs!

© Sylvia Leake 2016

The Fair Isle Chick Egg Cosy knitting pattern and design is for personal use only and should not be used for profit.